

Supplementary Information

Table S1. Reference samples from DNA Banks. **Kew**, Royal Botanic Gardens, Kew; **NHM**, Natural History Museum, London.

Source	Voucher Number	Species
Kew	13854	<i>H. androsaemum</i>
Kew	13993	<i>H. ascyron</i>
Kew	13923	<i>H. athoum</i>
Kew	13929	<i>H. calycinum</i>
Kew	13938	<i>H. delphicum</i>
Kew	13866	<i>H. kouytchense</i>
Kew	13896	<i>H. maculatum</i>
NHM	A12	<i>H. montanum</i>
Kew	13908	<i>H. patulum</i>
Kew	13876	<i>H. perforatum</i>
Kew	13921	<i>H. perforatum</i>
Kew	13932	<i>H. perforatum</i>

Table S2. Samples of *H. perforatum* and *H. maculatum* collected from Lithuania. The botanical identification is shown along with the wild collection location. Sample # refers to the dried leaf sample number assigned by the donors, DNA # is the randomized number assigned to DNA extracts by the authors.

Sample #	DNA #	Species	Habitat
mac 01	007	<i>H. maculatum</i>	Vilnius, Botanical Garden
mac 02	011	<i>H. maculatum</i>	Vilnius, Botanical Garden
mac 03	012	<i>H. maculatum</i>	Vilnius, Botanical Garden
mac 04	018	<i>H. maculatum</i>	Vilnius, Botanical Garden
mac 05	030	<i>H. maculatum</i>	Vilnius, Botanical Garden
mac 06	045	<i>H. maculatum</i>	Sirvintos, Ciobiskis
mac 07	001	<i>H. maculatum</i>	Raseiniai, Lyduvenai
mac 08	031	<i>H. maculatum</i>	Raseiniai, Lyduvenai
mac 09	027	<i>H. maculatum</i>	Raseiniai, Dubysa
mac 10	022	<i>H. maculatum</i>	Anyksciai, Svedasai
mac 11	014	<i>H. maculatum</i>	Kretinga, Kretinga
mac 12	034	<i>H. maculatum</i>	Kaunas, Girionys
mac 13	025	<i>H. maculatum</i>	Raseiniai, Katauskiai
mac 14	019	<i>H. maculatum</i>	Raseiniai, Gruzdiske

mac 15	036	<i>H. maculatum</i>	Silale, Pajuris
mac 16	023	<i>H. maculatum</i>	Raseminiai, Girkalnis
perf 01	005	<i>H. perforatum</i>	Kalvarija, Jungenai
perf 02	043	<i>H. perforatum</i>	Vilkaviskis, Naudsiai
perf 03	017	<i>H. perforatum</i>	Skudas, Mosedis
perf 04	026	<i>H. perforatum</i>	Anyksciai, Svedasai
perf 05	016	<i>H. perforatum</i>	Silute, Silute
perf 06	038	<i>H. perforatum</i>	Kaunas, Girionys
perf 07	044	<i>H. perforatum</i>	Svencioniai, Januliskis
perf 08	035	<i>H. perforatum</i>	Trakai, Rykantai
perf 09	029	<i>H. perforatum</i>	Palanga, Sventoji
perf 10	015	<i>H. perforatum</i>	Klaipeda, Karkle
perf 11	032	<i>H. perforatum</i>	Kelme, Tytuvėnai
perf 12	041	<i>H. perforatum</i>	Svencioniai, Labanoras
perf 13	028	<i>H. perforatum</i>	Jurbarkas, Jurbarkas
perf 14	024	<i>H. perforatum</i>	Panevezys, Panevezys
perf 15	013	<i>H. perforatum</i>	Kedainiai, Kampai
perf 16	037	<i>H. perforatum</i>	Raseiniai, Ariogala
perf 17	039	<i>H. perforatum</i>	Jurbarkas, Skirsnemune
perf 18	020	<i>H. perforatum</i>	Neringa, Juodkrante
perf 19	042	<i>H. perforatum</i>	Raseiniai, Raseiniai
perf 20	040	<i>H. perforatum</i>	Prienai, Zarstai
perf 21	033	<i>H. perforatum</i>	Panevezys, Ramygala
perf 22	021	<i>H. perforatum</i>	Druskininkai, Latezeris

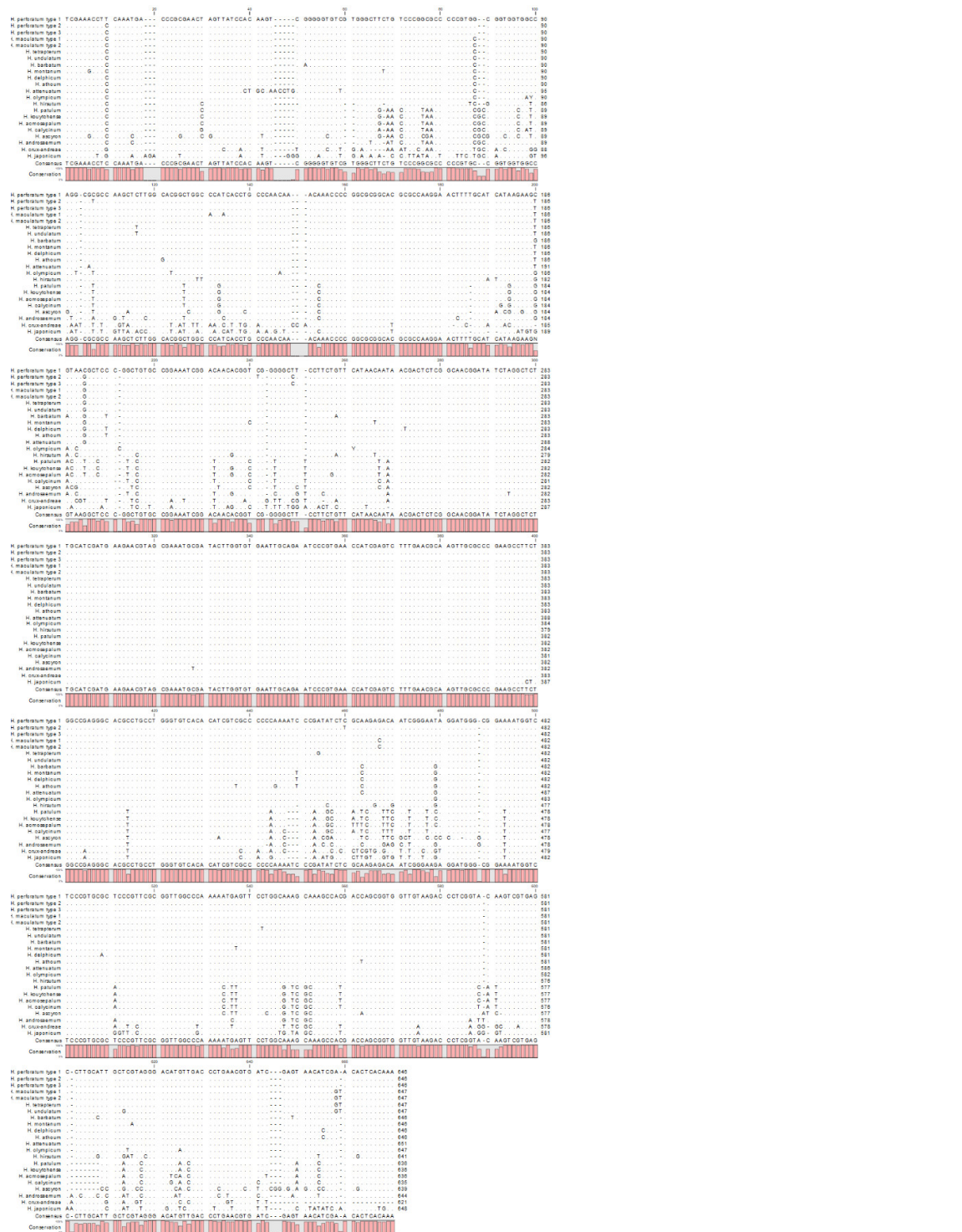


Figure S1. Multiple sequence alignment of the ITS region of the adulterant panel of *Hypericum* species. Three variants of *H. perforatum* and two of *H. maculatum* are shown aligned with representative sequences of the other panel members.

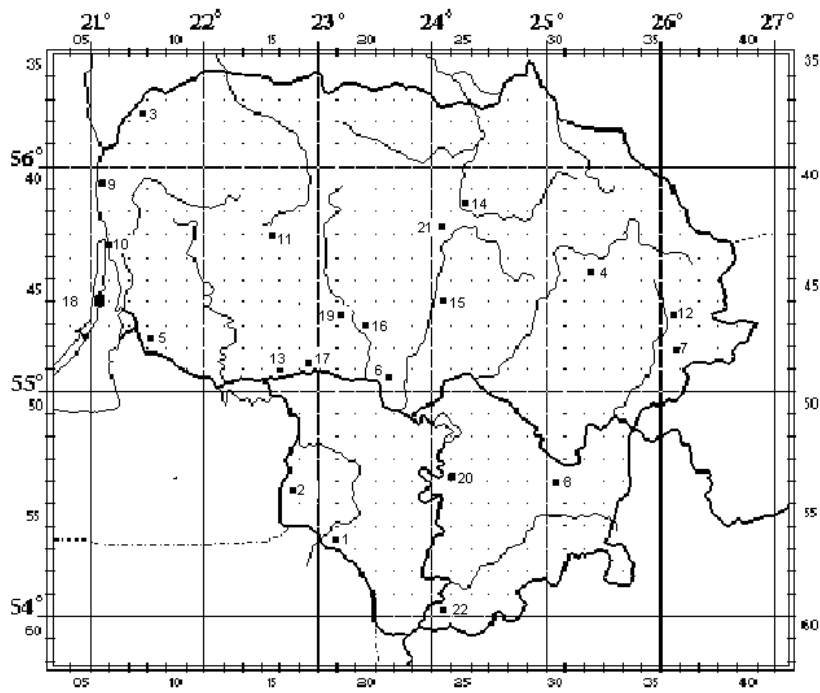


Figure S2a. Habitats of samples of *H. perforatum* from Lithuania. Numbers relate to samples in Table S2.

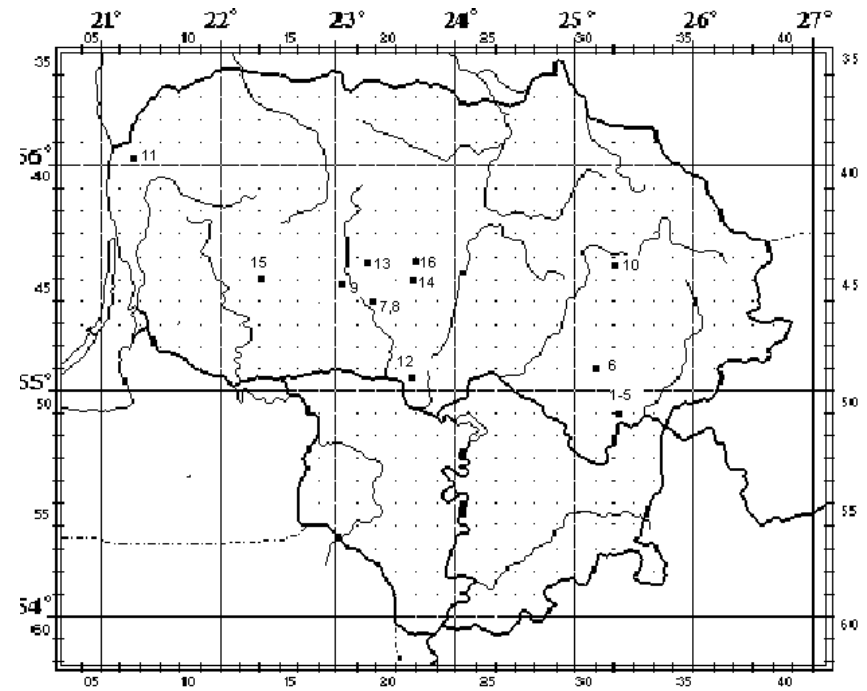


Figure S2b. Habitats of samples of *H. maculatum* from Lithuania. Numbers relate to samples in Table S2.